



Anthony Weyman
OPTOMETRIST
020 8363 0939

PIZZA
PAPA JOHN'S
BETTER INGREDIENTS. BETTER PIZZA.
PAPAJOHNS.CO.UK 0208 342 0808

Pertemps

WARHAMMER

12TH

Windmill Hill, EN2 7AF
Enfield

kings
GROUP



Windmill Hill, EN2 7AF

This charming two-bedroom first-floor period conversion offers a fantastic opportunity for both first-time buyers and investors. Well-presented throughout, the property boasts a spacious living area, providing ample room for relaxation and entertaining. The modern fitted kitchen/diner is perfect for cooking and dining with a contemporary feel, while the three-piece shower room ensures comfort and convenience. Additional benefits include gas central heating and double glazing throughout, offering warmth and efficiency. The property comes with a long 151-year lease, is chain-free, and has no service charge, making it an ideal option for hassle-free living.

Situated in a sought-after location, this home is within close proximity to local shops, amenities, and the vibrant Enfield Town Centre. Transport links are excellent, with Enfield Chase Station just 0.1 miles away and local bus routes nearby for easy commuting. Families will also appreciate being within the catchment area of popular schools, including Chase Side Primary School.

This property presents an excellent opportunity for a first-time purchase or investment in a highly desirable area.

Council Tax Band: C
Construction Type: Standard (Brick)
Flood Risk- Rivers & Seas: Very Low, Surface Water: Very Low

Offers In The Region Of £290,000



- Chain Free
- 151 Year Lease
- Within Walking Distance of Local Shops and Amenities
- Double Glazed Throughout
- Ideal First Time Purchase or Investment Opportunity

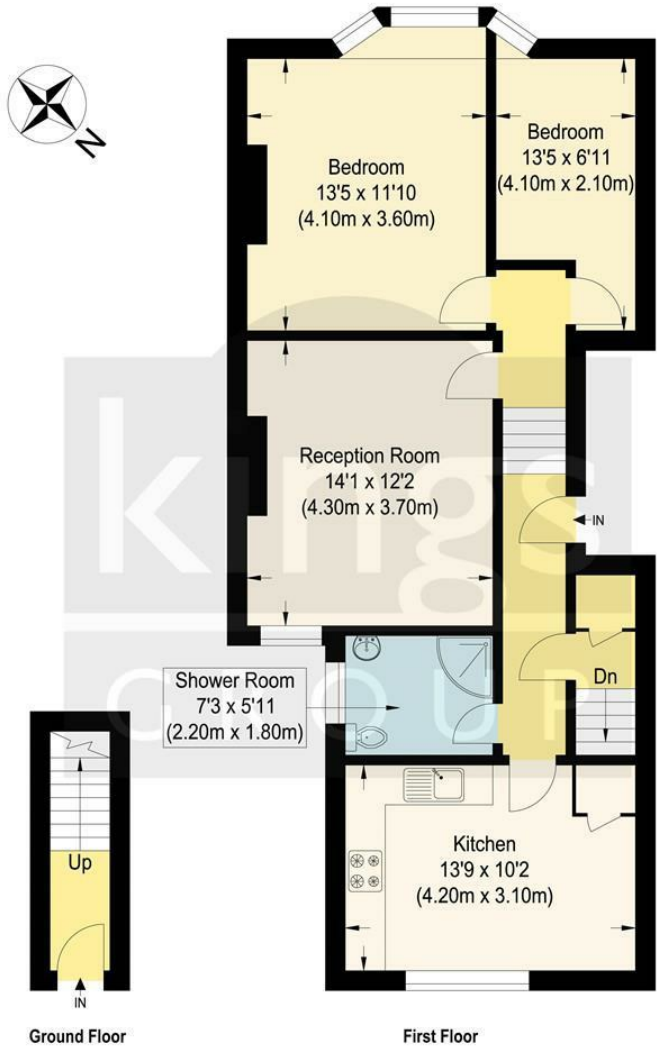
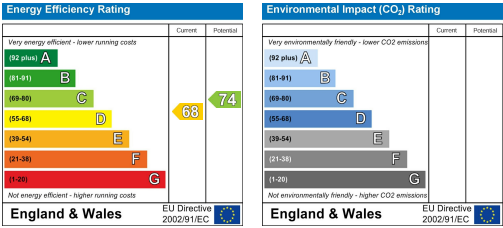
- No Service Charge
- 0.1 Miles to Enfield Chase Station With Direct Access into the City
- Within Catchment Area of Sought After Schools Including Chase Side Primary School
- Gas Central Heating
- Sought After Location











Windmill Hill

Approximate Gross Internal Floor Area : 70.0 sq m / 753.47 sq ft
Illustration for identification purposes only, measurements are approximate, not to scale.

THE PROPERTY MISDESCRIPTIONS ACT 1991. The agent has not tested any apparatus, equipment, fixtures or services and so cannot verify that they are in working order, or fit for the purpose. References to the Tenure of a property are based on information supplied by the vendor. The agent has not had sight of the Title documents. A buyer is advised to obtain verification from their Solicitor or Surveyor. Note: These details are correct at time of going to press.

25 Silver Street, Enfield Town, Middlesex,
EN1 3EF

T: 0208 364 4118

E:

www.kings-group.net

